



CEMBRE

SHEAR BOLTS CONNECTORS



SHEAR BOLTS CONNECTORS

Your medium-voltage connections have become simpler, safer and faster.

The new range of **mechanical clamping joints and cable lugs** is designed to ensure quick, reliable and safe installations in modern electricity generation, transformation and distribution systems. With the **stepless** technology, CEMBRE connectors provide a stable electrical contact and constant performance, reduce installation errors, and make fieldwork easier.

WHY CHOOSE THEM

- **Tool-less:** No crimping tool needed.
- **The right torque, always,** with the stepless technology.
- **Stable electrical contact,** even in heavy-duty applications.
- **Less stock required:** One product covers several cable cross-sections.
- **Ensured traceability:** The marking is visible even after the screw breaks.
- **Safer installation:** Removable cable centering devices, protection plugs for the screw breakage area (no sharp edges).

ADVANTAGES

- Quick installation
- Stable performance
- Great reliability
- No errors



APPLICATIONS

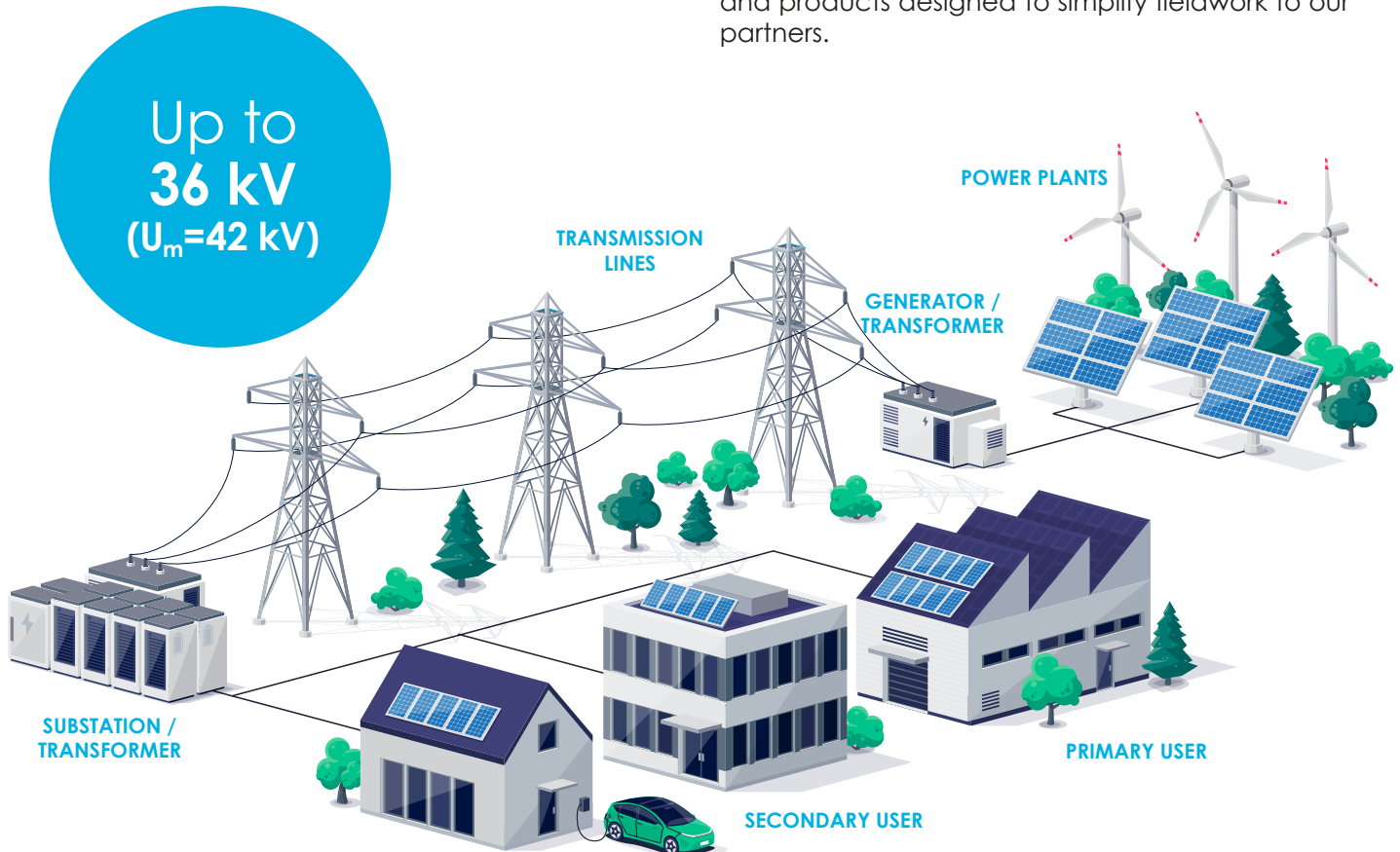


Perfect for all **medium-voltage** applications:

- Power plants
- Electricity grids
- Transformer substations
- Data centers
- Processing industry power supply electrical installations
- Connection and terminal kits

WHY CEMBRE

Reliability. Total process control. Certified tests.
We offer constant quality, continuous supplies, and products designed to simplify fieldwork to our partners.



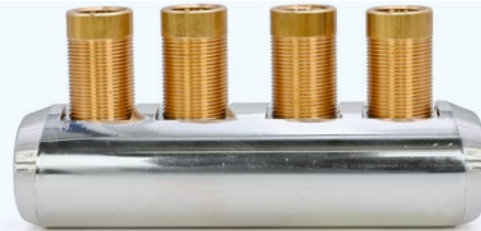
OUR PRODUCTS

MBS50-240E THROUGH CONNECTOR

- Cable cross-section **50-240 mm² (1-500 MCM)**
- Stable, seamless contact
- Diagonal grooves for lower opposition and longer duration, to break the aluminum oxides on the conductor
- Tin plated aluminum body, "stepless" screws with antifriction disk
- Removable centering devices for perfect alignment
- Lab-certified performance, according to **CEI EN 61238-1-3**

Main advantages:

- ✓ High mechanical seal
- ✓ Instant assembly
- ✓ Certified reliability



MLA50-240-E CABLE LUGS

- Cable cross-section **50-240 mm² (1-500 MCM)**
- Even clamping, regardless of the conductor
- Tin plated aluminum body, "stepless" screws with antifriction disk
- Removable centering devices for perfect alignment
- Lab-certified performance, according to **CEI EN 61238-1-3**

Main advantages:

- ✓ Clean, robust connection
- ✓ No strand damage
- ✓ Compatible with the main M-V connection and terminal kits



STRENGTHS

Stepless technology

- No predetermined break point
- Consistent thread load capacity
- Optimal break torque guaranteed

Screw antifriction disk

- No strand damage
- Reduced friction for greater contact force
- The antifriction disk is permanently secured within the screw body by a riveting process

Asymmetrical barrel design

- Greater thickness near the screw area, to prevent its weakening.

Traceability

- CEMBRE screws are traceable after they break off (batch number marked on the screw base)

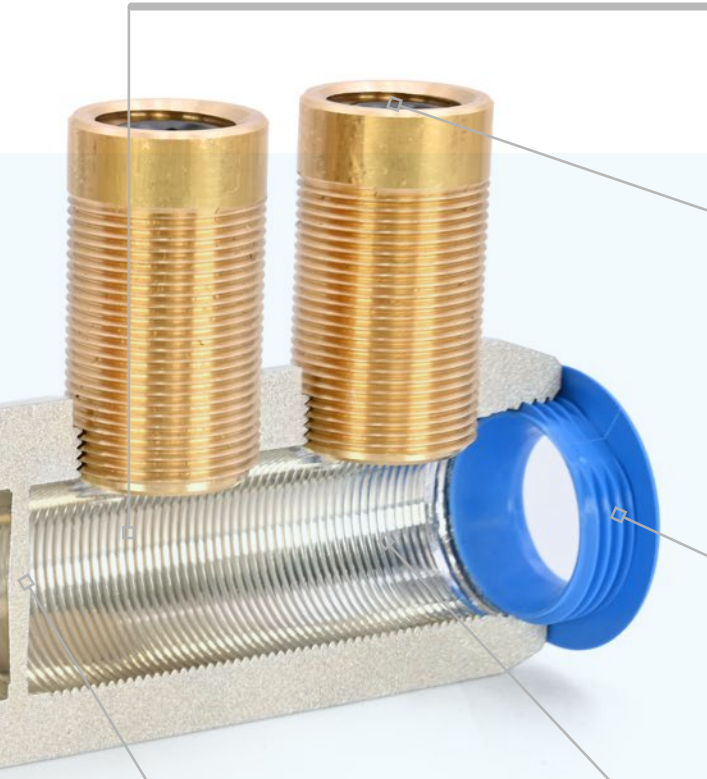
Protection plug

- Covers the entire hole
- Restores the body's cylinder shape
- No sharp edges that could damage the connection kit insulation



Universal application

- Covers a broad range of cross-sections (see installation instructions)
- For all kinds of aluminum and copper connectors
- Less installation errors



Standard tool installation

- Hexagonal wrench
- Easy to install

Centering rings

- Damage-proof, removable ring when selecting the wrong size.
- Optimal conductor centering
- Reduced stress in the transition area between the connector's body and the cable insulation

Knurled inside

- Aluminum oxides on the cable strands are easier to break
- Greater traction resistance
- Improved conductivity
- Greater current flow
- Low contact opposition and enhanced reliability

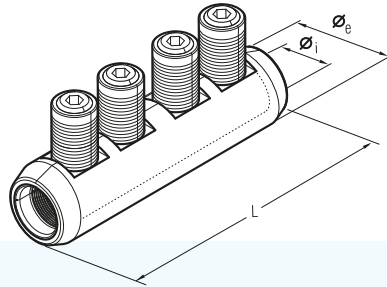
Central stop

- Better conductor positioning
- No oil leaks when connecting oil impregnated conductors
- Transitional applications from polymeric conductors to oil impregnated conductors.

TECHNICAL SPECIFICATIONS



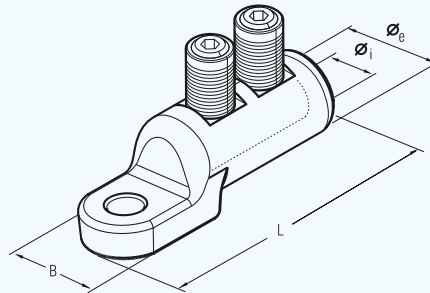
MBS50-240E



Cross-section AWG	Type	Size in.			Number of screws	Number of centering devices	Standard/minimum packaging
		Øe	Øi	L			
1 - 500 MCM	MBS50-240E	1.34	0.79	4.9*	4	3	5/1

* with no centering devices applied

MLA50-240-E



Cross-section AWG	Type	Ø Stud in.	Size in.				Number of screws	Number of centering devices	Standard/ minimum packaging
			Øe	Øi	B	L			
1 - 500 MCM	MLA50-240-12E	1/2"	1.30	0.79	1.30	4.19*	2	3	10/1
1 - 500 MCM	MLA50-240-16E	5/8"	1.30	0.79	1.30	4.19*	2	3	10/1

* with no centering devices applied

Cod. 6263180



www.cembre.com



CEMBRE S.p.A.

via Serenissima, 9
25135 Brescia
Italy
Ph +39 030 36921
ufficio_vendite@cembre.com
sales@cembre.com

CEMBRE, S.L.U

Calle Verano 6 y 8
Pl Las Monjas
28850 Torrejón de Ardoz
Madrid
Spain
Ph +34 91 4852580
comercial@cembre.es

CEMBRE Ltd.

Dunton Park,
Kingsbury Road
Curdworth,
Sutton Coldfield
West Midlands, B76 9EB
United Kingdom
Ph +44 01675 470440
sales@cembre.co.uk

CEMBRE IE

Unit 9, Airport Trade Park
Santry, co.
Dublin
Ireland
sales@cembre.ie

CEMBRE S.A.R.L.

Tour Part-Dieu
129 rue Servient
69003 Lyon
France
Tel +33 04 20 93 01 70
info@cembre.fr

CEMBRE, INC.

Raritan Center Business Park
300 Columbus Circle-Suite F,
Edison, NJ 08837 USA
Ph +1 (732) 225-7415
sales.us@cembre.com

CEMBRE B.V.

Luchthavenweg 53
5657EA Eindhoven
The Netherlands
Ph +31 (0) 40 311 1937
info@cembre.nl

**Cembre Electrical
Connections Shanghai Limited**

Room 2111,
Jin Hang Mansion, NO.83
Wan Hang Du Road
Jing An District
Shanghai
Ph +86-2160195778
info@cembre.cn
sales@cembre.cn

CEMBRE GmbH

Geschäftsbereich
Energie- und Bahntechnik
Heidemansstr. 166
80939 München - Germany
Ph + 49 89-3580676
info@cembre.de

Geschäftsbereich
Industrie und Handel
Boschstraße 7
71384 Weinstadt - Germany
Ph +49 7151-20536-60
info-w@cembre.de

